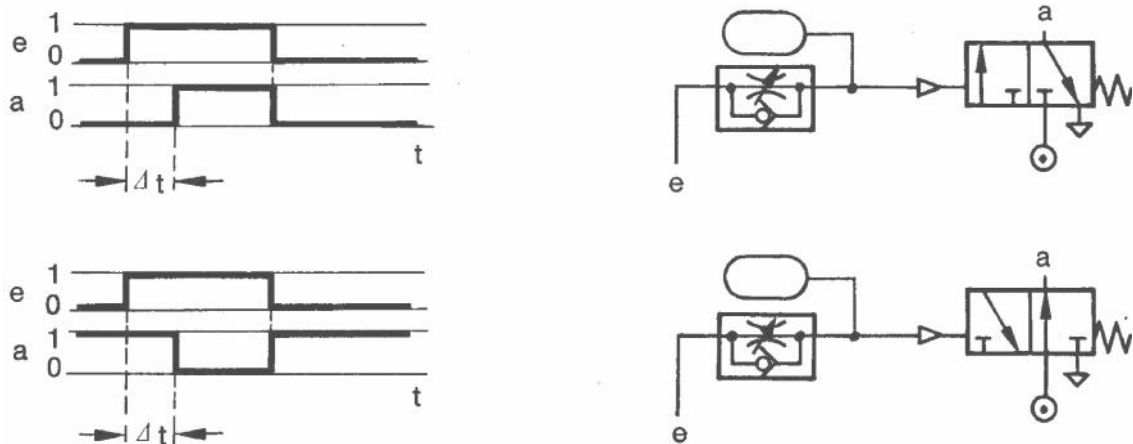


PNEUMATIC TIMERS

- Pneumatic Timers are used to create time delay of signals in pilot operated circuits.
- Available as Normally Closed Timers and Normally Open Timers.
- Usually Pneumatic timers are On Delay Timers
Delay of signals is very commonly experienced in applications such as
- Bonding of two pieces.
- Normally Open Pneumatic Timer are also used in signal elimination
- Normally Open Pneumatic Timers are used as safety device in Two Hand Blocks

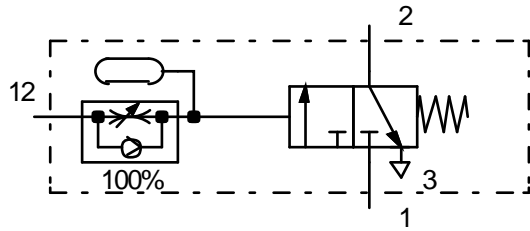
Pneumatic Timers



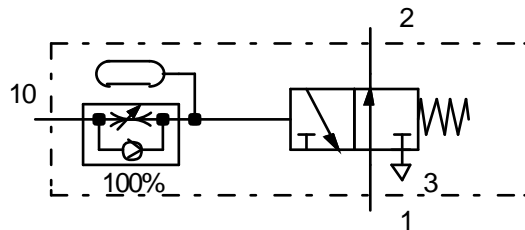
ON DELAY TIMER NORMALLY OPEN AND NORMALLY CLOSED

Figure 6.6 Pneumatic Timers

Pneumatic Timers



NORMALLY CLOSED TIMER



NORMALLY OPEN TIMER

Figure 6.7 Pneumatic Timers

A Pneumatic Timer is a combination valve which consists of three parts

1. 3/2 way pilot operated directional control valve [NC or NO],
 2. A one way flow control valve and
 3. An accumulator
- Signal input is supplied at port 1 and delayed signal out put is taken at 2. A signal source is connected at port 1

Time Delay Valve [N.C]

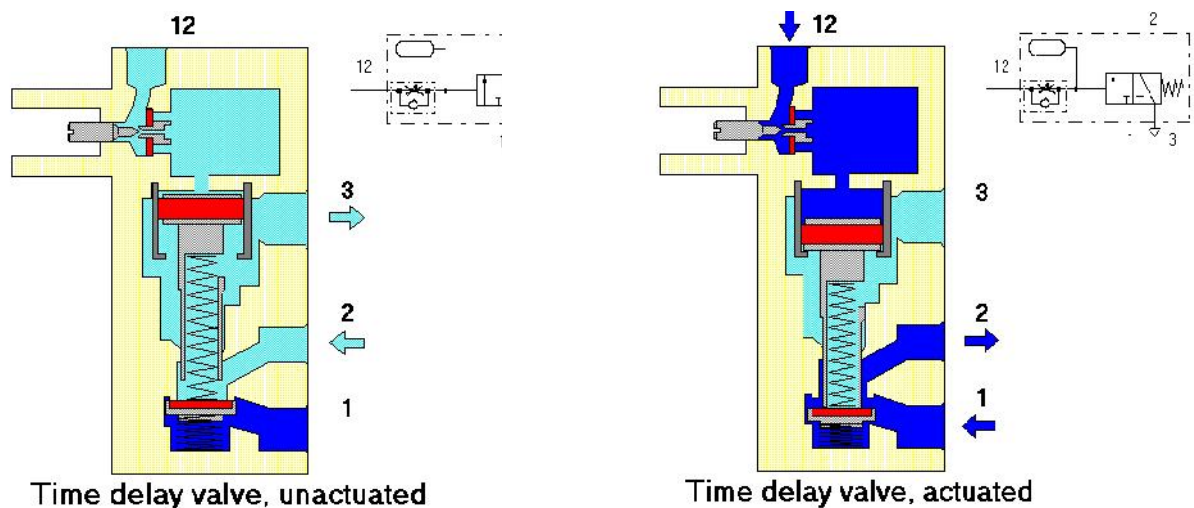


Figure 6.8 Details of Time Delay Valve [Normally Closed]