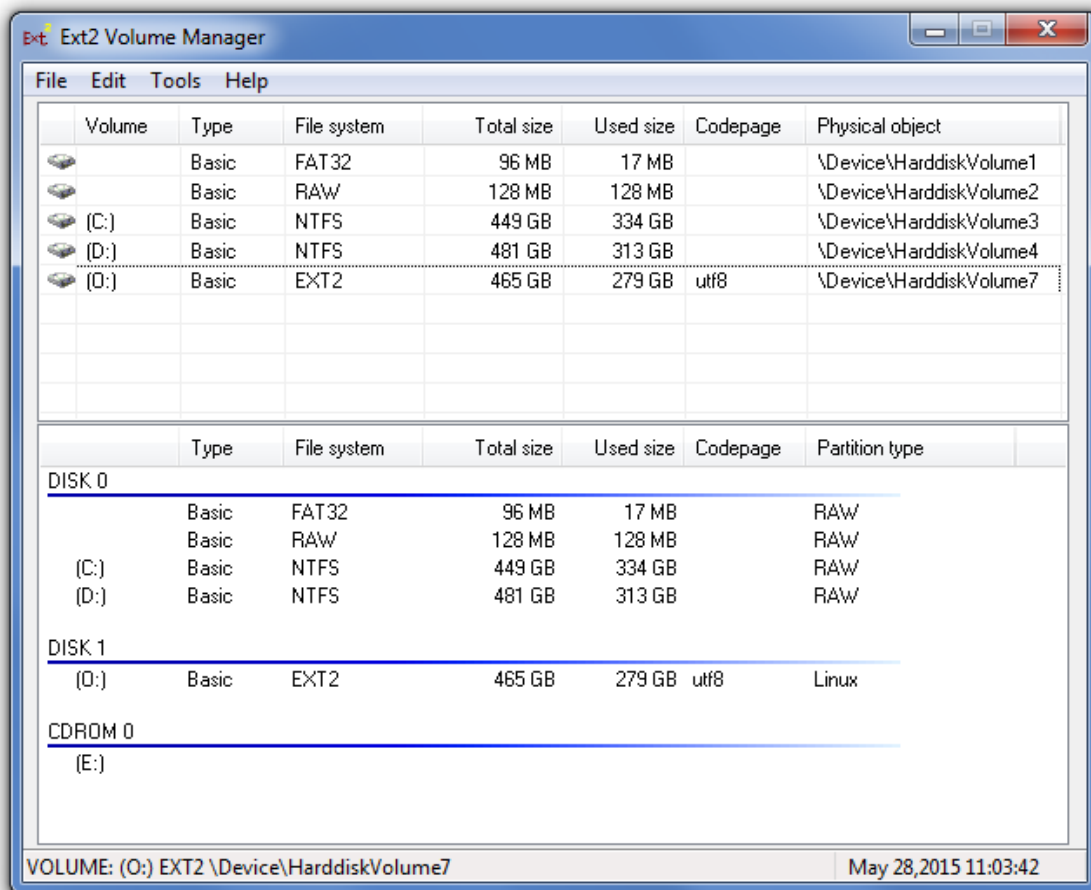


HOW TO ACCESS LINUX EXTENDED FILE SYSTEM USING WINDOWS

Sometimes it can be very useful to access Linux *Extended File System* using

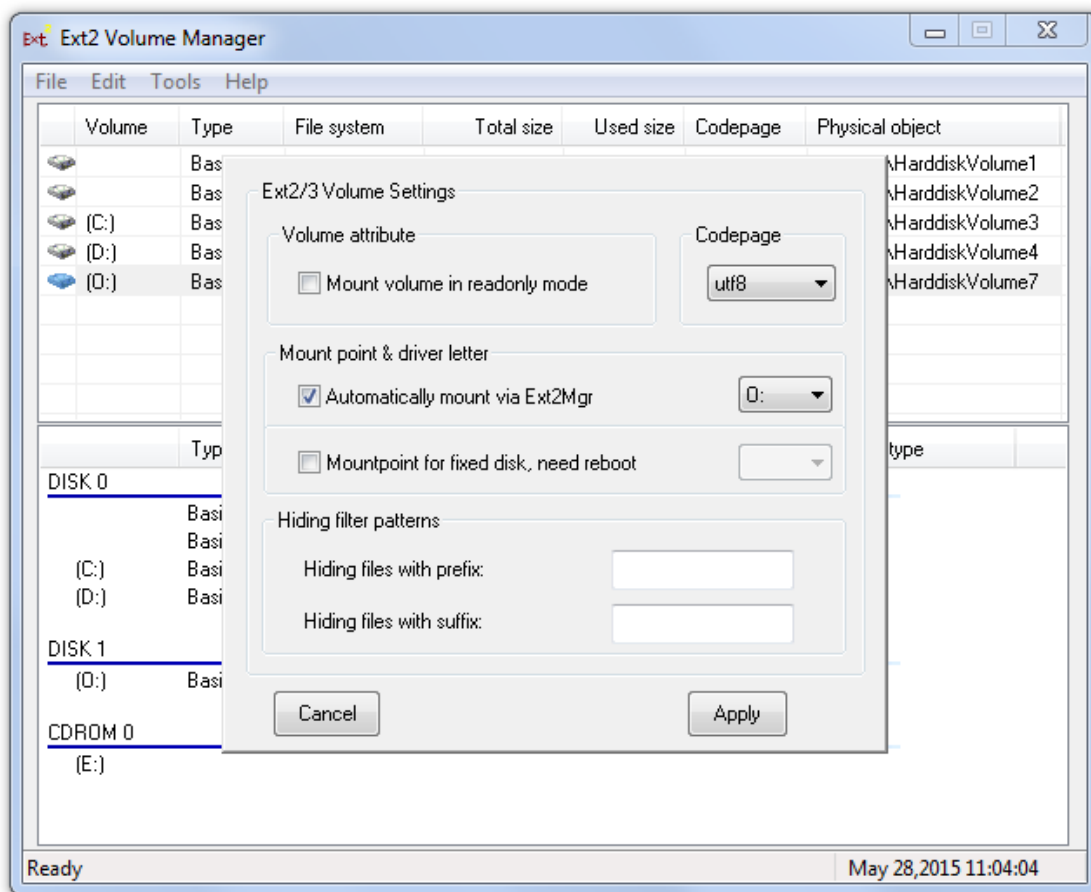
Windows to copy important data or just check out its contents.

The best way to do this is to use Ext2Fsd an *Extended File System* driver for Windows.



Ext2Fsd is an *Extended File System* driver for Windows 2000, Windows XP, Windows Vista and Windows 7.

It supports reading from and writing to **Second Extended File System (ext2)** and **Third Extended File System (ext3)**, reading from **Fourth Extended File System (ext4)**.



I am using it extensively to access my portable external hard drive on other computers without any problems.

Source: <https://blog.sleeplessbeastie.eu/2015/07/06/how-to-access-linux-extended-file-system-using-windows/>