

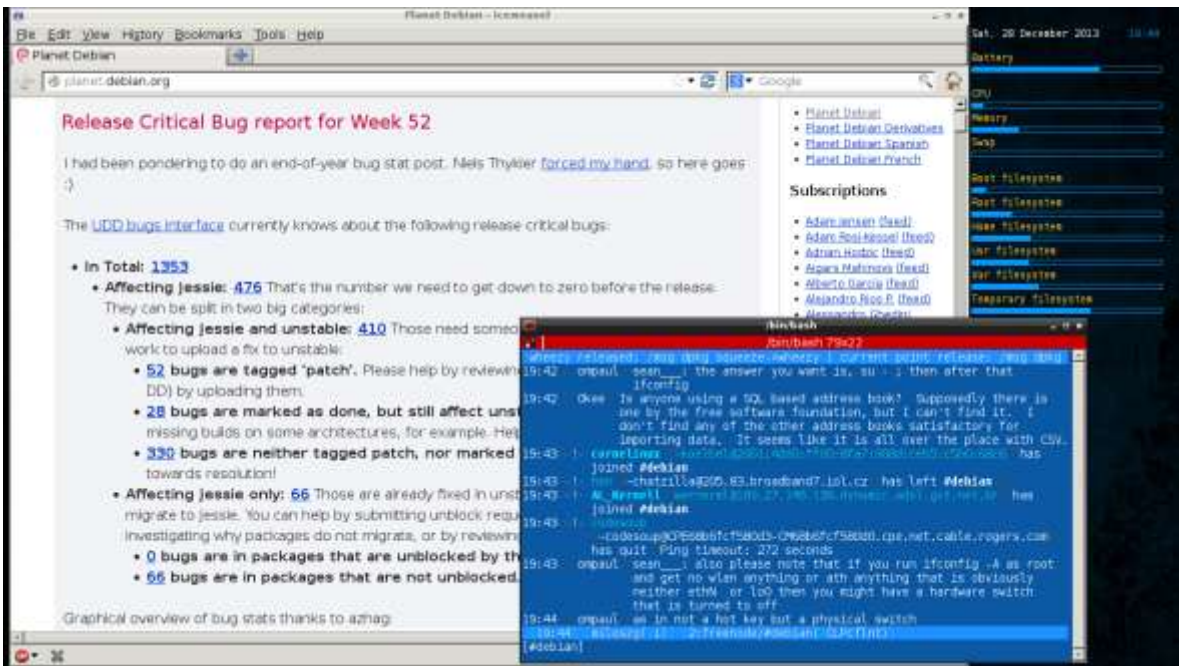
FRESH INSTALL OF THE DEBIAN WHEEZY

End of the year is the best time to reinstall operating system and change encryption keys due to couple of additional free days at home so today I will shortly present my setup.

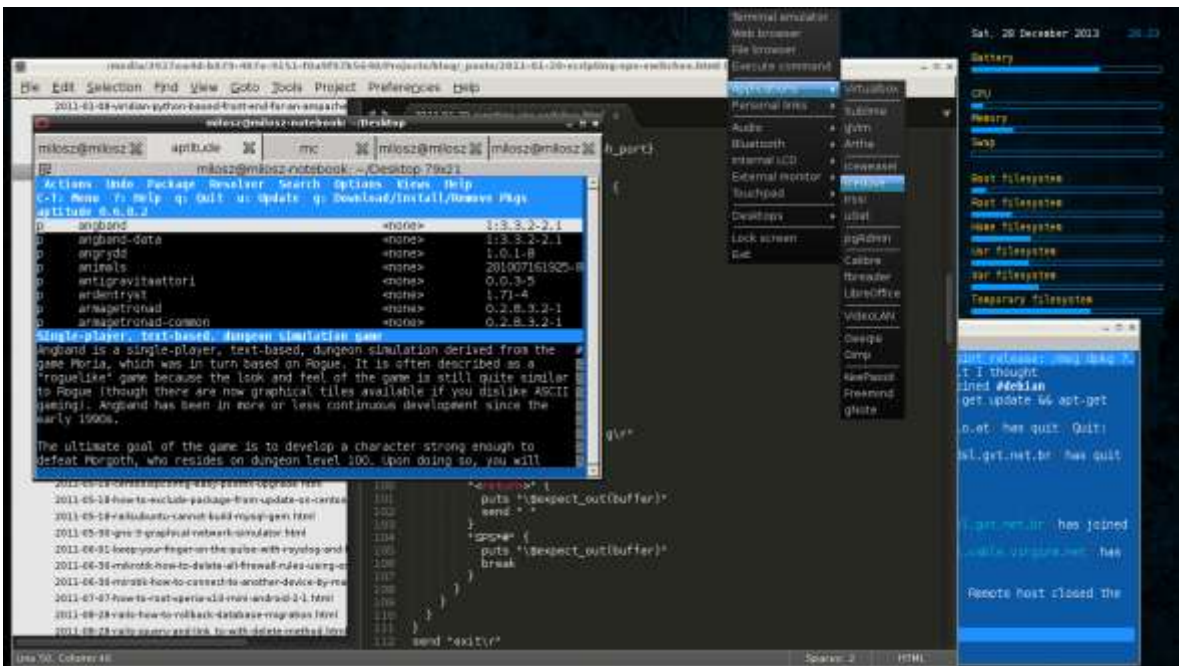
Due to encrypted LVM setup I am using *SLiM* login manager with auto-login feature enabled, and *XScreenSaver* to lock the screen immediately.



I am using *OpenBox* window manager, light-weight *Conky* system monitor, and Dark Debian wallpaper.



As you see I am using only basic system utilities without distracting icons, unnecessary messages - *wpa_supplicant* for wireless network management, *xrandr* for external LCD configuration, except for Bluetooth devices management as I am using handy *Blueman* utility.



My basic application list include *Thunar*, *Terminator*, *Virtualbox*, *Sublime Text*, *gVim*, *Artha*, *Iceweasel*, *Icedove*, *Irssi*, *uGet*, *pgAdmin*, *Calibre*, *LibreOffice*, *VideoLAN*, *Geeqie*, *Gimp*, *KeePassX*, and *Freemind*.

There are couple of things that I need to work on but I am happy as I mostly use it for web browsing, virtualization, and SSH.

Source: <https://blog.sleeplessbeastie.eu/2013/12/31/fresh-install-of-the-debian-wheezy/>