

POWER AMPLIFIER CIRCUIT USING TDA2009

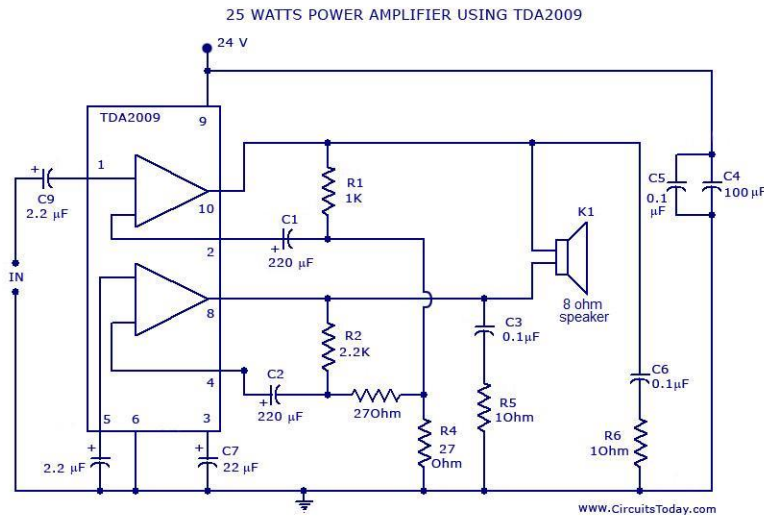
Power Amplifier Circuit – 25 Watts

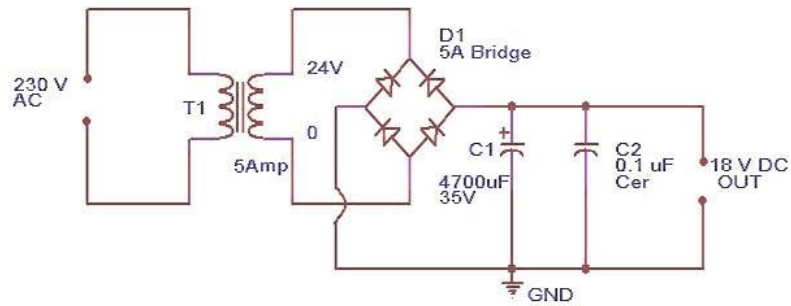
Description

Here is the diagram of a 25 Watt power **amplifier circuit** made of TDA 2009 IC. TDA 2009 has two channels each rating 12.5 watts on 4 Ohm load. Here the two channels are bridged to get a single output channel weighting 25 W.

TDA 2009 IC has also built-in features such as short circuit protection, thermal protection, overload protection etc using very low external components. The most interesting factor I see about this IC is that it requires no dual supply.

Power Amplifier Circuit Diagram and Power Supply Circuit Schematic





POWER SUPPLY FOR 25 W TDA 2009 AMP

Notes

- Do not connect more than 24 V to TDA 2009.
- If 5 ampere bridge is not available make one using four 5 A diodes.
- Fit a proper size heat sink to TDA 2009
- **Do not operate the circuit without heat sink.**
- For volume control connect a 10K pot
- All capacitors in this circuit must be rated above 25 V

Source : <http://todayscircuits.blogspot.com/2011/06/power-amplifier-circuit-using-tda2009.html#.VUB4mtKqqkp>