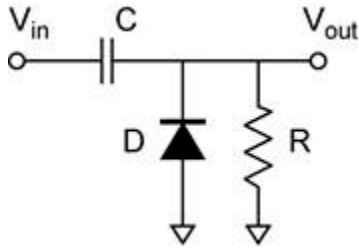
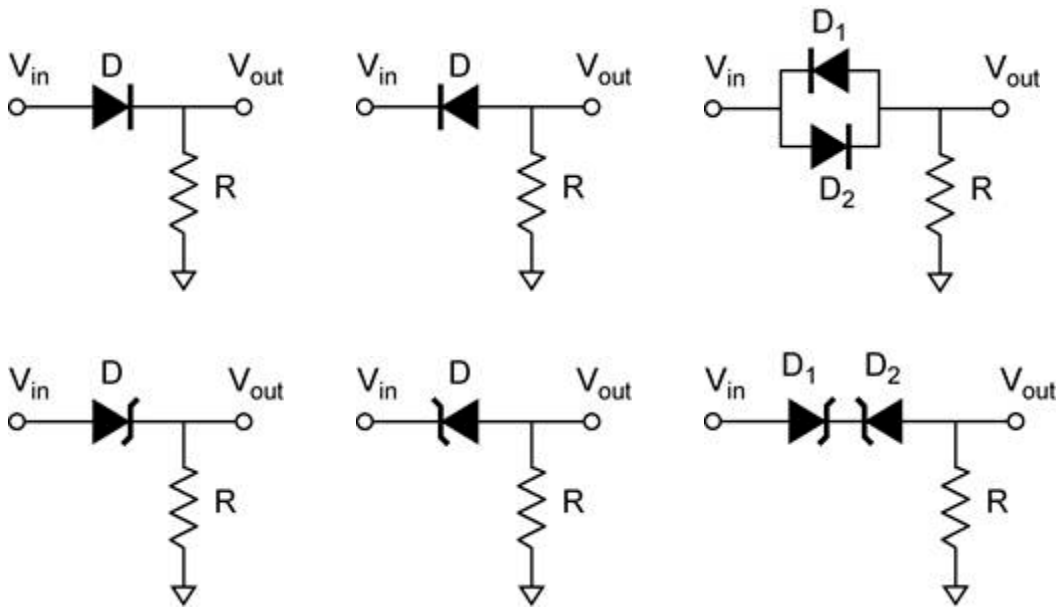


DIODE CIRCUIT APPLICATIONS

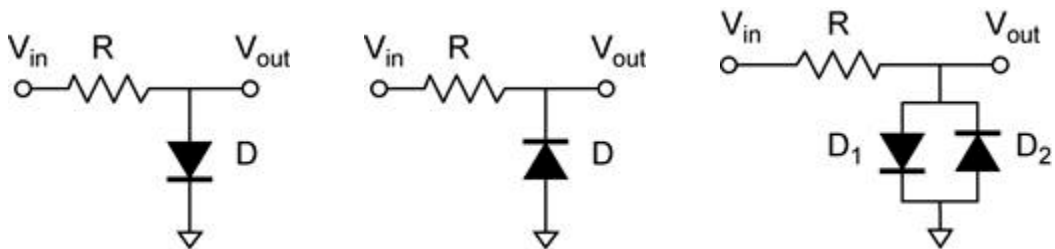
Clamp



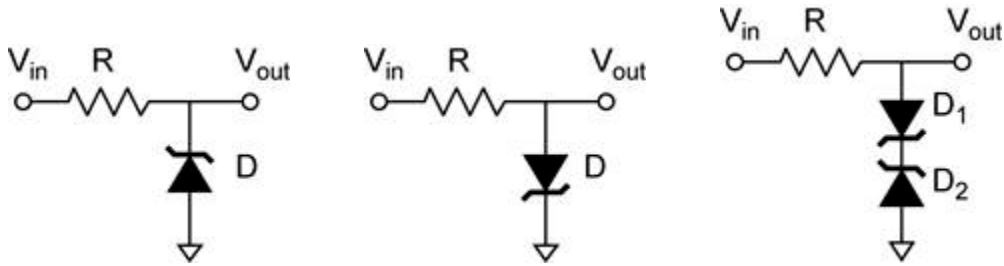
Level Shifters



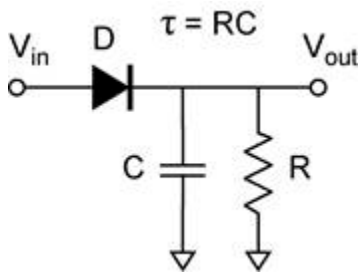
Clipper



Clipper (continued)

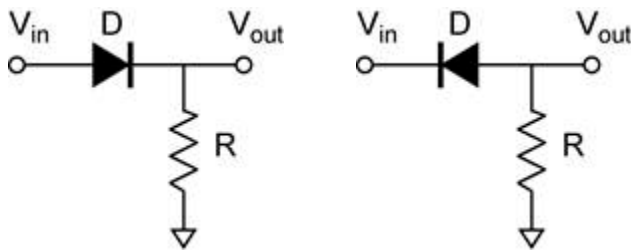


Peak detector

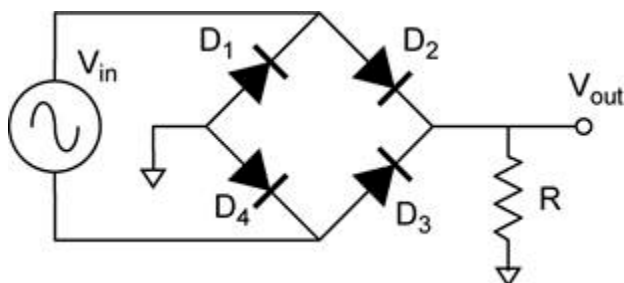


Power Supply Applications

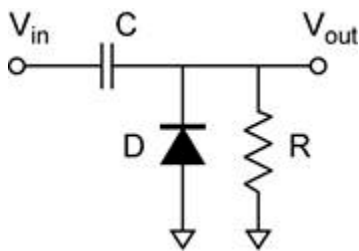
Half-Wave Rectifier (R is the load.)



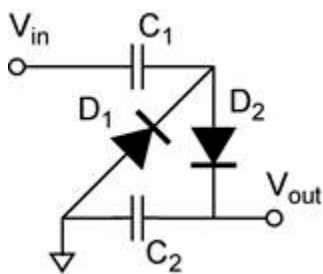
Full-Wave Rectifier using a Bridge Rectifier. (R is the load.)



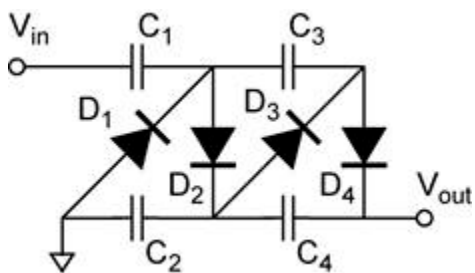
Half-Wave Voltage Doubler. (R is the load.)



Full-Wave Voltage Doubler



Full-Wave Voltage Quadrupler



General $2n$ Voltage Multiplier

