

# ANTARCTIC ICE SHELF RIFT: PINE ISLAND GLACIER



Source: NASA, Goddard Space Flight Center.

## Watching the Birth of an Iceberg

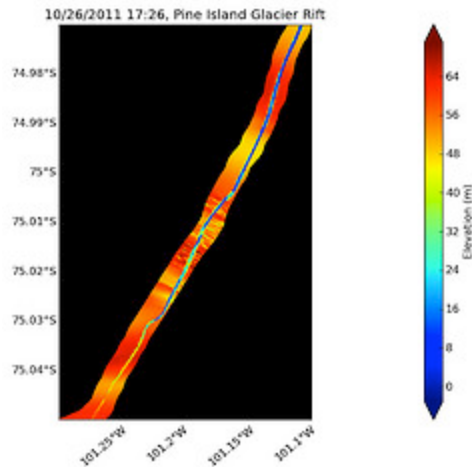
After discovering an emerging crack that cuts across the floating [ice shelf](#) of Pine Island Glacier in [Antarctica](#), NASA's Operation IceBridge flew a follow-up mission and made the first-ever detailed airborne measurements of a major iceberg calving in progress. NASA's Operation Ice Bridge, the largest airborne survey of Earth's polar ice ever flown, is in the midst of its third field campaign from Punta Arenas, [Chile](#). The six-year mission will yield an unprecedented three-dimensional view of Arctic and Antarctic [ice sheets](#), ice shelves and sea ice.

Pine Island Glacier last calved a significant iceberg in 2001, and some scientists have speculated recently that it was primed to calve again. But until an Oct. 14 IceBridge flight of NASA's DC-8, no one had seen any evidence of the ice shelf beginning to break apart. Since then, a more detailed look back at satellite imagery seems to show the first signs of the crack in early October.

While Pine Island has scientists' attention because it is both big and unstable – scientists call it the largest source of uncertainty in global sea level rise projections – the calving underway now is part of a natural process for a [glacier](#) that terminates in open water. Gravity pulls the ice in the glacier westward along Antarctica's Hudson Mountains toward the [Amundsen Sea](#). A floating tongue of ice reaches out 30 miles into the Amundsen beyond the grounding line, the below-sea-level point where the ice shelf locks onto the continental bedrock. As ice pushes toward the sea from the interior, inevitably the ice shelf will crack and send a large iceberg free.

"We are actually now witnessing how it happens and it's very exciting for us," said IceBridge

project scientist Michael Studinger, Goddard Space Flight Center, Greenbelt, Md. "It's part of a natural process but it's pretty exciting to be here and actually observe it while it happens. To my knowledge, no one has flown a lidar instrument over an actively developing rift such as this."



Source: NASA. [Click to Enlarge](#). A primary goal of Operation IceBridge is to put the same instruments over the exact same flight lines and satellite tracks, year after year, to gather meaningful and accurate data of how ice sheets and glaciers are changing over time. But discovering a developing rift in one of the most significant science targets in the world of glaciology offered a brief change in agenda for the October 26, 2011, flight — if only for a 30-minute diversion from the day's prescribed flight lines.

The IceBridge team observed the rift running across the ice shelf for about 18 miles. The lidar instrument on the DC-8, the Airborne Topographic Mapper (ATM), measured the rift's shoulders about 820 feet apart (250 meters) at its widest, although the rift stretched about 260 feet wide along most of the crack. The deepest points from the ice shelf surface ranged 165 to 195 feet (50 to 60 meters). When the iceberg breaks free it will cover about 340 square miles (880 square kilometers) of surface area. Radar measurements suggested the ice shelf in the region of the rift is about 1,640 feet (500 meters) feet thick, with only about 160 feet of that floating above water and the rest submerged. It is likely that once the iceberg floats away, the leading edge of the ice shelf will have receded farther than at any time since its location was first recorded in the 1940s. [Click in the blue box below to see a video.](#)

*In October, 2011, NASA's Operation IceBridge discovered a major rift in the Pine Island Glacier in western Antarctica. This crack, which extends at least 18 miles and is 50 meters deep, could produce an iceberg more than 800 square kilometers in size. IceBridge scientists returned soon after to make the first-ever detailed airborne measurements of a major iceberg calving in progress. Credit: NASA/Goddard/Jefferson*

The day's flight mission, crisscrossed the flow of the glacier near the grounding line to gather data on its elevation, [topography](#) and thickness. The ATM makes its precision topography maps with a laser that scans 360 degrees 20 times per second, while firing 3,000 laser pulses per second. When flying at an altitude of 3,000 feet, as during this flight, it measures a swath of the surface about 1,500 feet wide. As the crack measured at more than 800 feet wide in places, it was important for the flight to hold tight over the crevasse.

While the ATM provided the most detailed measurements of the topography of the rift, other instruments onboard the DC-8 also captured unique aspects. The Digital Mapping System, a nadir-view camera, gathered high-definition close-ups of the craggy split. On the flight perpendicular to the crack, the McCORDS radar also measured its depth and the thickness of the ice shelf in that region.

Catching the rift in action required a bit of luck, but is also testimony to the science benefit of consistent, repeated trips and the flexibility of a manned mission in the field.

"A lot of times when you're in science, you don't get a chance to catch the big stories as they happen because you're not there at the right place at the right time," said John Sonntag, Instrument Team Lead for Operation IceBridge. "But this time we were."

Source : <http://www.eoearth.org/view/article/51cbf2467896bb431f6a88c0/?topic=51cbfc78f702fc2ba8129e7b>